



House - Terraced (EPC Rating: D)

7 DUNDEE STREET, DARLINGTON, DLI IJX

PCM

£650 PCM

TLG | The Letting Group
Lettings | Management | Repossession



2 Bedroom House - Terraced located in Darlington

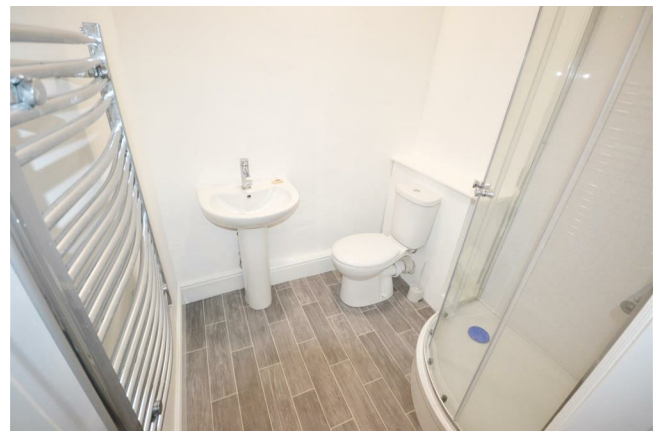
A superb 2-bedroom home, situated off the Haughton Road area of Darlington. This spacious home offers two large reception rooms, two bathrooms, and a large rear yard. Situated close to the town centre and local transport links, this property is ideal for families and professionals alike.

The home briefly comprises: entrance hall with laminate flooring, through to large lounge with bay window and feature fireplace, through to rear dining room, leading on to galley kitchen with white units and beech effect worktops, leading to fully fitted bathroom with white suite. To the first floor the home has two large double bedrooms and an additional shower room with shower unit and white suite.

The home is complete with gas fired central heating, double glazing throughout and a pleasant rear yard.

EPC Rating: D

Council Tax Band: A

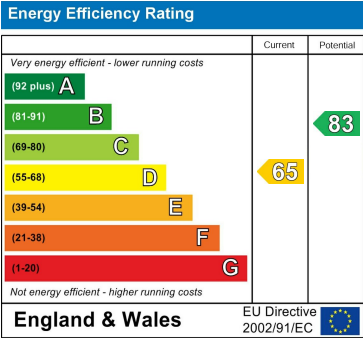


DARLINGTON | 29A DUKE STREET, DARLINGTON, COUNTY DURHAM, DL3 7RX

Council Tax Band

A

Energy Performance Graph



Call us on
01325 460 330
kevin.studholme@thelettinggroup.com

Agents Note: Whilst every care has been taken to prepare these particulars, they are for guidance purposes only. All measurements are approximate and are for general guidance purposes only and whilst every care has been taken to ensure their accuracy, they should not be relied upon and potential buyers are advised to recheck the measurements.